



## ***EGRESS*** - "To depart Gracefully"

### **MAIN INDEX**

**Click on the subject desired for more information:**

[General information about EGRESS](#)

[How to set up \*EGRESS\* to shutdown WINDOWS](#)

[How to set up \*EGRESS\* to restart WINDOWS](#)

[How to set up \*EGRESS\* to reboot your computer](#)

[How to run a \*DOS\* application](#)

[How to Register EGRESS...](#)

[Copyrights & Credits](#)

## General Information about *EGRESS*

*EGRESS* is a simple program that will allow you to click an icon in Program Manager and have *WINDOWS* immediately terminate, or terminate and restart, or even reboot your computer. You can also use *EGRESS* to execute recalcitrant DOS applications that could not normally be run from *WINDOWS*.

Use File Manager to copy *EGRESS.EXE* and *EGRESS.HLP* to any convenient directory. The directory does not have to be on the PATH. The examples shown here have *EGRESS* located in a subdirectory of *WINDOWS* named "UTIL". Next install *EGRESS* in as many of your Program Manager Groups as you wish. Use the File Manager "Drag & Drop" feature to drop *EGRESS* on the desired Groups, or use the Program Manager "File"->"New"->"Program Item" facility.

You may also wish to install *EGRESS* in your Start-Up group to be run as an Icon at the bottom of your desktop.

Three warnings-

1) *EGRESS* will immediately execute when you activate it with a commandline parameter. It will not stop to verify that you wish to terminate *WINDOWS* the way closing down from Program Manager or File Manager will.

2) *EGRESS* will not save any new settings or icon arrangements you may have made in your groups. If you wish to save new settings, exit through Program Manager or File Manager in the normal way.

3) *EGRESS*, like almost all other software, is **not** guaranteed. The author would be glad to hear from you if you find a bug (Heaven Forbid!) or have a suggestion for improvements.

*EGRESS* does not modify any *WINDOWS* files, nor change any *DOS* files. You can easily remove it from your system by deleting it's icon from your Program Manager groups and then deleting *EGRESS.EXE* and *EGRESS.HLP* from the directory you installed them in.

Please remember that *EGRESS* is Shareware. Shareware is NOT "free software"! If, after you have tested it for a few weeks, and you find it to be useful you are expected to register with the author by paying a small fee.

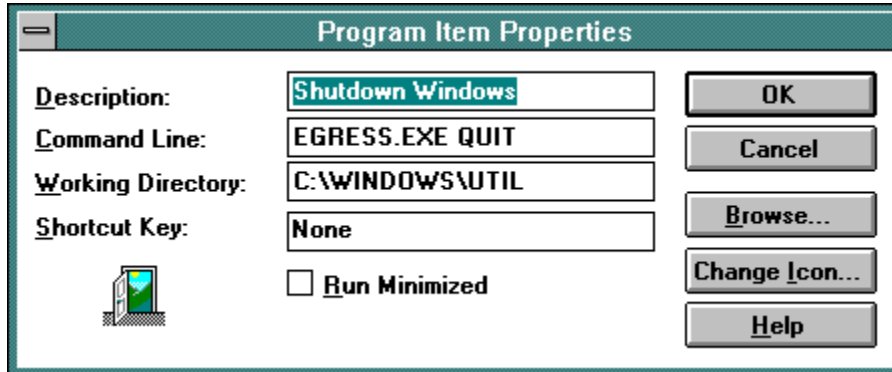
[Click this line to learn how to register EGRESS](#)

[Click this line to return to the main Index](#)

## How to set up *EGRESS* to shutdown *WINDOWS*

Run *EGRESS* with the option keyword "QUIT" on the command line of the Program Manager Properties. Alternatively you can specify a number between 1 and 255 (except for 066 & 067) that will be returned in the DOS Errorlevel .

Using "QUIT", the command line should look something like this:



### **How to set up *EGRESS* to restart *WINDOWS***

Run *EGRESS* with the option keyword "RESTART" on the command line of the Program Manager Properties. It should look something like this:

```
C:\WINDOWS\UTIL\EGRESS.EXE RESTART
```

### **How to set up *EGRESS* to reboot your computer**

Run EGRESS with the option keyword "REBOOT" on the commandline of the Program Manager Properties. It should look something like this:

```
C:\WINDOWS\UTIL\EGRESS.EXE REBOOT
```

## Run a DOS Application

*EGRESS* can shut-down *WINDOWS*, run a DOS program, and then restart *WINDOWS*. This is a useful feature if you have one or more *DOS* applications that simply will not run from within *WINDOWS*, even after much fiddling with PIF files and other options.

Set up your Program Manager properties for *EGRESS* similar to the example below. The "Working Directory" indicates where *EGRESS* can be found. If *EGRESS* is on your PATH you won't need this; or you could include it as part of the "Command Line" entry. Including it in the "Working Directory" entry leaves more room in the "Command Line" entry for the required path to the *DOS* program and any necessary command-line parameters.

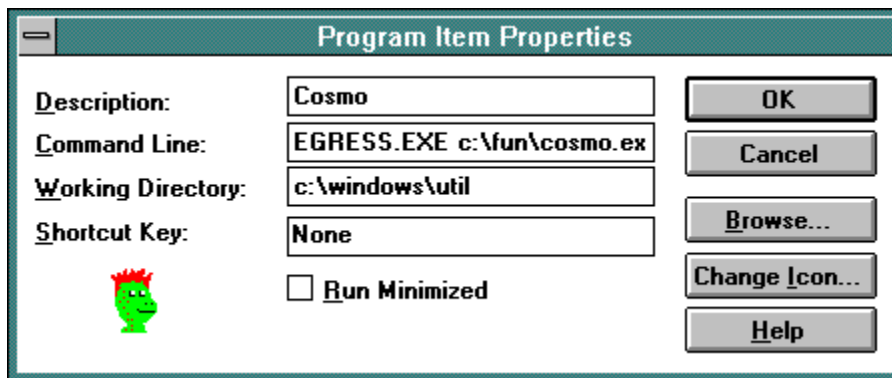
*WINDOWS* always exits with the current directory set to itself. Your *DOS* application will need to change the directory if it requires a specific directory to be current at the time it is executed.

Notice that the "Command Line" entry includes the full path to the *DOS* program: "c:\fun\cosmo.exe" in this case. The full path is required, even if the *DOS* program is located on the PATH.

The *DOS* program you specify to be run must be a .EXE or .COM program. You cannot specify a .BAT file. If you must run a .BAT file, you will need to run another version of COMMAND.COM with the desired .BAT file named as a parameter. Here is an example:

```
"EGRESS.EXE command.com /c c:\fun\cosmo.bat"
```

You will probably want to assign a custom Icon, instead of the default *EGRESS* icon that would normally be shown. Choose "Change Icon" and then "Browse" to pick a suitable Icon from Program Manager, MORICONS.DLL, or from a collection of your own.



**ERROR- Can't Find Program**

The command-line parameter for *EGRESS* does not specify a valid path and program. You must specify the complete path to the DOS program you wish to have executed.

This error may also be caused by insufficient system memory, or if one or more other applications refuse to close.

See Running a DOS Application and Applications Won't Close for more information.

**ERROR- Application(s) won't Close**

One or more *WINDOWS* applications refused to close (terminate). This could be caused by a file not being saved or by responding "Cancel" to an application's "OK to close?" question.





## Registering *EGRESS*...

*EGRESS* is Shareware. If you find this program useful and/or amusing please register with the author by paying the regular registration fee of \$5.00. If this program is not worth \$5.00 to you, don't use it! Registered users will receive notification of the next release of *EGRESS*.

Please notice that *EGRESS* does not "nag" you to register. The author is depending on your voluntary registration to keep up his morale and encourage him to produce bigger and better Shareware programs (He also has 3 college-age children and a wife to support).

Please pass along copies of *EGRESS* to your friends and favorite bulletin boards. Be sure to include all of the original distribution package, which includes *EGRESS.EXE*, *EGRESS.HLP*, *EGRESS.TXT*, *PURGE.TXT* and *README.TXT*. Your installation package may also have included the installation program files *INSTALL.EXE* and *INSTALL.INF*.

[Click here to register NOW!](#)

[Click here for Copyright information](#) .

## Copyrights

*EGRESS* is Copyright(c) 1993 by: Kurt P. Herzog  
1440 N.E. Tenth Street  
Grants Pass, Oregon 97526 USA

You can reach the author by E-Mail on CompuServe at 72122,2023  
From the Internet send Mail to [72122.2023@compuserve.com](mailto:72122.2023@compuserve.com)

-----

*WINDOWS* and *MS-DOS* are trademarks of the Microsoft Corporation, copyright 1990-1993.

*Borland Pascal*, *Turbo Pascal* and *Turbo Pascal for Windows* are trademarks of Borland International, copyright 1983, 1990-1993.

The icons used in *EGRESS* came (with some modifications) from a collection distributed by Bright Futures, Inc.

### U.S. Government Restricted Rights:

Use, duplication or disclosure by the Government is subject to restrictions set fourth in subparagraph (a) through (d) of the Commercial Computer Restricted Rights clause at FAR 52.227-19 when applicable, or subparagraph (c) (1) (ii) of the Rights in Technical Data and Computer Software clause at DFARS 252.227-1013, and in similar clauses in the NASA FAR Supplement.

### License Agreement:

This software is provided on a trial basis for a 60 (sixty) day period. This is intended to allow 30 days to decide on the purchase of this software, and 30 days to purchase a copy. After 60 days, should you decide not to purchase this software, you must remove all copies from your system. By using this software you are agreeing to these terms.

### Warranty:

This software is sold on an as-is basis. The author (Kurt P. Herzog) specifically disclaims all warranties, expressed or implied. In no event shall the author be liable for any loss of profit or any other damage including but not limited to special, incidental, consequential or other damages including damages to a third party. By using this software you are agreeing to these terms. If these terms are not agreeable, do not use this software.

**REGISTRATION FORM**    Print this form on your printer by selecting "Print Topic" from the Help "File" Menu.

**EGRESS**    Registration Form

Version 1.2    12/93

Mail this form with your check or money order payable in US funds to:

**Kurt P. Herzog**  
**1440 N.E. Tenth Street**  
**Grants Pass, OR 97526 USA**

Your Name: \_\_\_\_\_

Address: \_\_\_\_\_

City: \_\_\_\_\_

State: \_\_\_\_\_                      Zipcode: \_\_\_\_\_

Register EGRESS for each machine on which the program is used.  
Enclose \$5.00 (Check or Money Order in US funds) for each copy of EGRESS being registered:

Number of copies \_\_\_\_\_ x \$5.00        =        \$ \_\_\_\_\_

You will receive an acknowledgment and receipt by return mail.

(The remainder of this is optional, but the author would like to know...)

Where did you get your copy of *EGRESS*?

\_\_\_\_\_  
\_\_\_\_\_

Comments?    Criticism?    Accolades?

\_\_\_\_\_  
\_\_\_\_\_

**THANKS FOR YOUR SUPPORT!**

PATH - the directory "route" that *DOS* follows to locate programs. Normally defined in your *AUTOEXEC.BAT* file. See your *DOS* manual for more information.

DOS - The "Disk Operating System". The most basic software level installed on your computer. See your *DOS* manual for more information.

PIF - a "Program Information Eile". A file of program information and options that pertain to a single application to be run from within *WINDOWS*. See your *WINDOWS* manual for more information.

MORICONS.DLL - A file containing dozens of icons for use with *WINDOWS* program manager items.  
This file comes with *WINDOWS* version 3.1.

.EXE - The normal type of *DOS* "executable" program files. See your *DOS* manual for more information.



.COM - A normal type of *DOS*' "compiled" program files. See your *DOS* manual for more information.

.BAT - A DOS "batch" file of commands to be executed. See your DOS manual for more information.

COMMAND.COM - DOS' command processor. See your DOS manual for more information.

ERRORLEVEL - A code returned by DOS programs when they terminate. "0" normally indicates no error, or a normal termination. Other numbers can represent various other conditions. See your DOS manual for more information.

DRAG & DROP - You must have WINDOWS version 3.1 to use this feature. See your WINDOWS manual for more information.

See your WINDOWS manual for instructions on how to create new Program Items within your Program Manager Groups.

START-UP GROUP - Programs in the Start-up group are automatically started when *WINDOWS* starts. You must have *WINDOWS* version 3.1 or later to use this feature.





